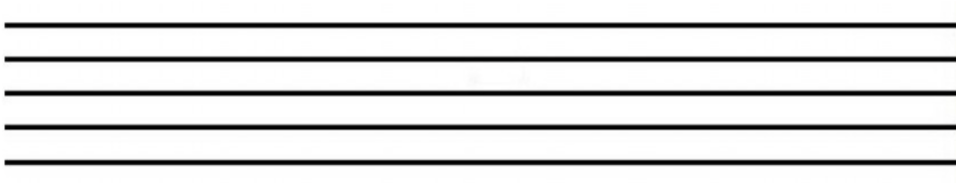


Revision Guidance: Preparation for Summative Assessment 1

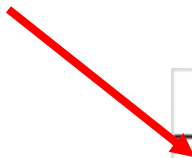
[illegible]

Music is written in many different ways. This sheet is about **stave notation**.

A **stave** is made up of 5 horizontal, parallel lines

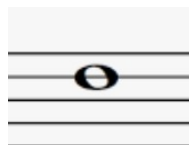


At the beginning of the stave there is always a clef – this is the key that tells you where each letter note goes. You are learning about the **treble clef**.

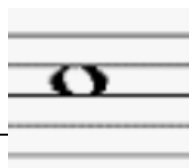


The round head of the note can be placed in different places to mean different notes.

It can be placed **on a line**



Or **in a space** (in between the lines)



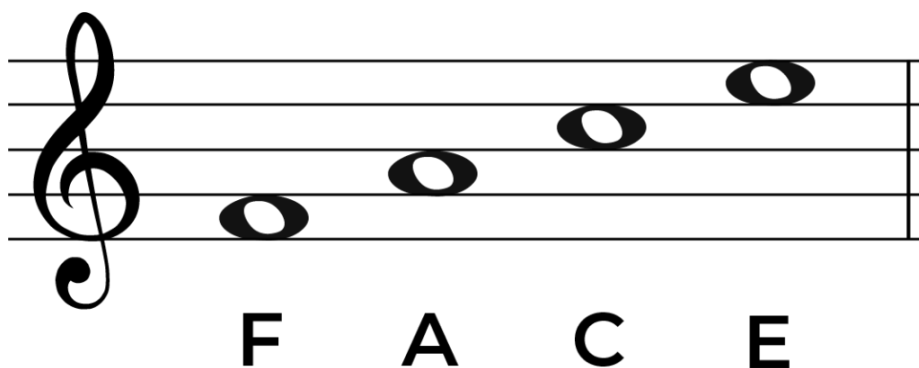
Year 7 Homework Sheet

Treble Clef Notes 1

The notes go up the stave in **alphabetical order**.

However, it is sometimes easier to remember them by using mnemonics (phrases that are easy to remember)

The notes in the spaces spell the word **FACE**



So to work out a note use the following steps:

Step 1 – Is the note on a line or in a space?

Step 2 – count from the bottom which line or space

Step 3 – Use the mnemonic



Step 1 – in a space

Step 2 – 1st space

Step 3 – F A C E

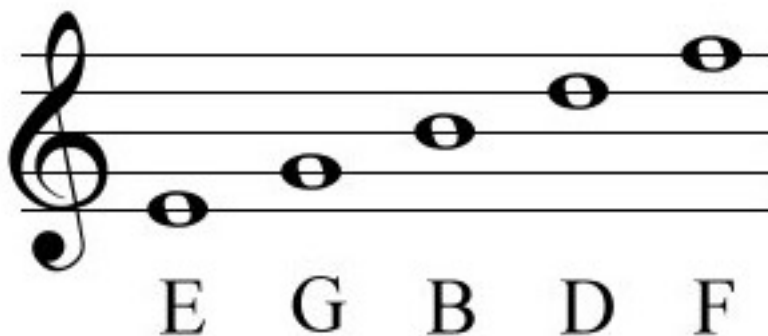
The note is F

The notes go up the stave in **alphabetical order**.

However, it is sometimes easier to remember them by using mnemonics (phrases that are easy to remember)

The notes on the lines can be remembered using:

Every **G**reen **B**us **D**rives **F**ast



So to work out a note use the following steps:

Step 1 – Is the note on a line or in a space?

Step 2 – count from the bottom which line or space

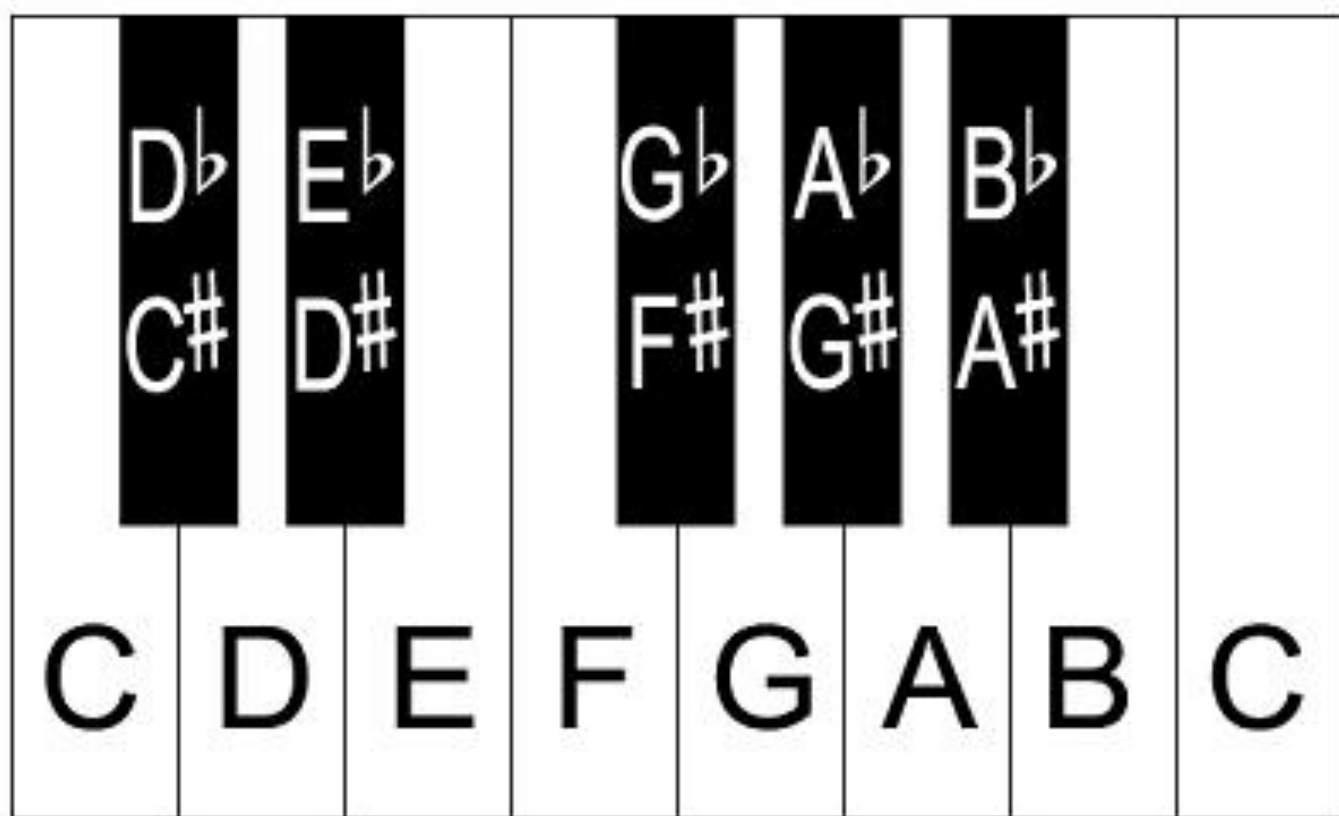
Step 3 – Use the mnemonic



Step 1 – on a line

Step 2 – 3rd line






Step 3 – E G **B** D F The note is B



Year 7 Homework Sheet

LEARN – what each symbol looks like, what it is called and how many beats it is worth.

Note Values

British note names	Note symbols	Note value
Semibreve		4 beats
Minim		2 beats
Crotchet		1 beat
Quaver		1/2 of a beat
Semiquaver		1/4 of a beat

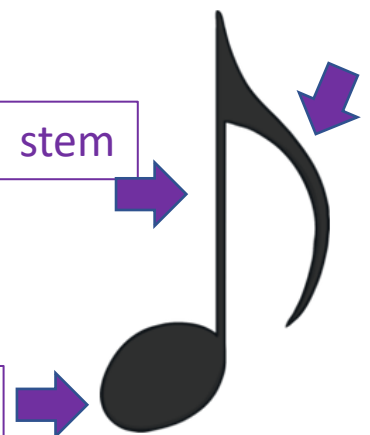
Points to remember:

- Notes can have an open or closed notehead
- Notes with a stem (line) can go either up or down
- Shorter notes have more complex symbols

notehead

stem

flag



Year 7 Homework Sheet

LEARN – the name of each part of the drumkit.



Parts of a Drumkit